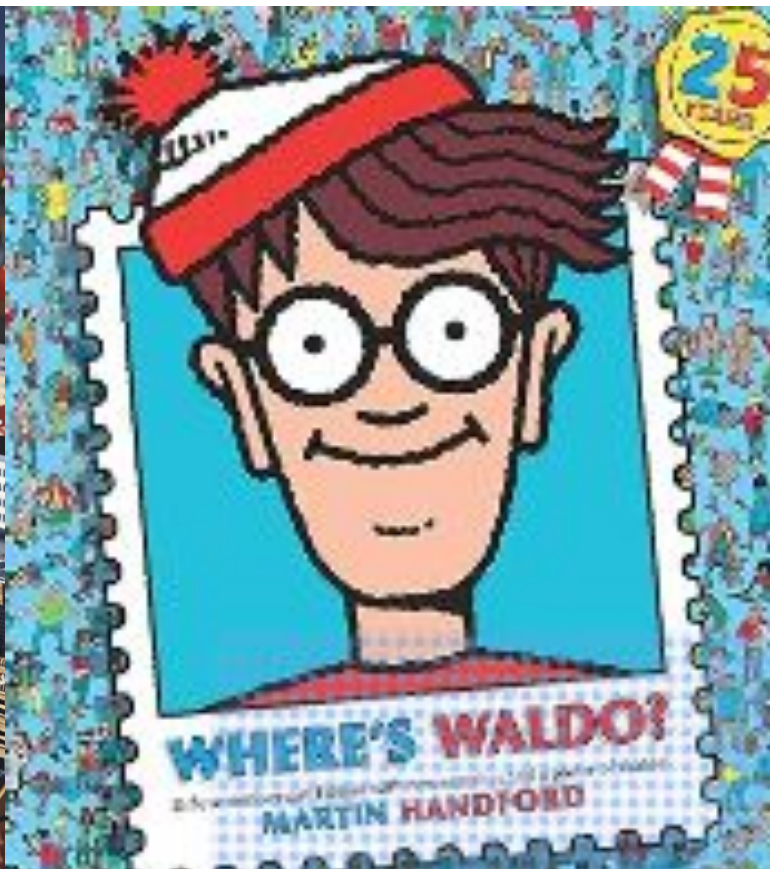




POSTMAN



OpenAI



**Wie Computer mit OpenAI programmatisch interagieren -  
Spaß mit Lego, Postman, DALL-E, Whisper und ChatGPT**

**Johannes Nicolai, Postman ([johannes.nicolai@postman.com](mailto:johannes.nicolai@postman.com))**

© All rights reserved by Postman Inc



what's  
in it for  
**ME?**





Johannes Nicolai

Open Source enthusiast highly interested in APIs, Application Lifecycle Management, continuou...

[View personal profile](#)

50+ Profile views

Social

- <https://postman.com>
- [@Pulipan1](#)
- [@jonico](#)

Teams (5)

- Postman
- Performance Motors Co.
- Perpetual Motion Insurance Co.
- speeding-robot-691127
- Siemens AG

Manage User Profile Settings

About Me



I am an Open Source Enthusiast, originally working for GitHub, now working for Postman, who is interested in all things in all things IssueOps, integrations, CI/CD and API design. Check my GitHub profile ([@jonico](#)) to learn more about my projects. When I started at Postman, I noticed that it is actually quite similar to GitHub - just for APIs and not for code. However, some similar concepts had different names, so I created this table to make adoption easier and use my two favorite platforms together.

Postman Concept	GitHub Equivalent Concept	Remarks
<a href="#">Team</a>	<a href="#">Enterprise Account</a>	Probably the biggest difference between terms: A Postman team consists of literally all users and workspaces of your entire company - or at least all the users that are part of your plan. A team can have unlimited workspaces. If you are looking for a concept to group a



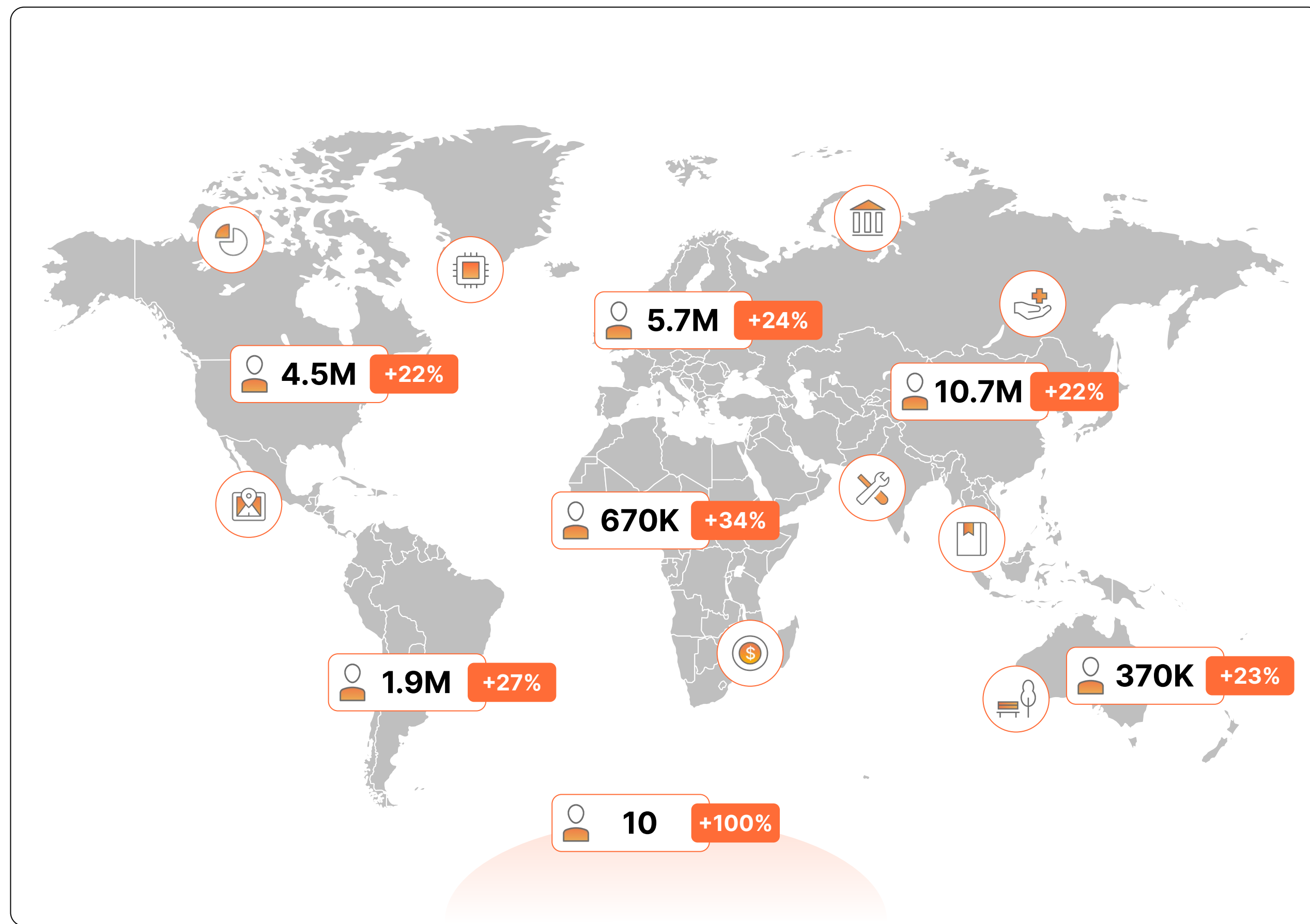
## Developer- chosen global standard



30M+ developers with  
double digit YoY growth

300k+ public APIs

120M+ collections





←→↺🔍https://www.postman.com/explore/spotlight

☆⚙️🌐🔔🔒📱👤

HomeWorkspaces ▾API Network ▾

🔍 Search Postman

⚙️🔔🌐🔒Upgrade

🏠 Explore

🔦 Spotlight

↗️ Trending APIs

📁 Collections500k+

🗂️ Workspaces200k+

📄 Flows3k+

Categories

E-commerce

eSignature

Travel

Database

App Security

All Categories →

🏠 Financial Services

Banking and stock market APIs for managing personal finance, real-time...

View →

📅 Developer Productivity

Must-fork APIs to improve productivity during the software development...

View →

🧠 Artificial Intelligence

Ready to use APIs to add Artificial intelligence capabilities to your app...

View →

New and Noteworthy

View all →

Discover newly added public workspaces with public APIs from a multitude of industries.

📦 UPS APIs🏆

This workspace contains resources that you can demo and share with customers and partners.

By UPS Developers🔒Updated a month ago10k+ views

🏢 Siemens Xcelerator Developer Portal

Siemens Xcelerator Developer Portal provides a one stop for developer resources. See more at https://developer.siemens.com

By Siemens AG🔒Updated on 24 Jan, 20245k+ views

📦 MonsterAPI

Access AI models at scale using Monster API for use cases like: Text to image, Image to image, Pix2Pix and Whisper API for speech to text

By Q BlocksUpdated 4 hrs ago2k+ views

Popular on Postman today

View all →

Discover what's new and popular on the Postman API Network!

📦 Instagram API

Official Instagram API.

By Meta🔗📄 CommunicationUpdated a year ago20k+ views

🌱 Kontent.ai APIs

By Kontent.aiUpdated on 23 Feb, 20245k+ views

📦 Amazon Payment Services Postman Collection

APS API consisting payment operations and collection of innovative API's to build your Payment Ecosystem on Mobile, Website & Apple Pay

By Amazon Payment Services🔗📄 PaymentsUpdated on 9 Oct, 20233k+ views

Publish your work on Explore

Share and showcase your work for millions to find, collaborate or use for their projects.

Create Public Workspace →

## All categories

Explore by category to discover high quality APIs in your domain of interest

🔒 App Security

APIs to enhance the security of applications by protecting them from...

View →

🧠 Artificial Intelligence

Ready to use APIs to add Artificial intelligence capabilities to your app...

View →

💬 Communication

APIs enabling the exchange of information and news via messaging,...

View →

📊 Data Analytics

APIs enabling seamless data generation, processing, analysis, and...

View →

🗄️ Database

Find database APIs on the Postman Public API Network. Discover public...

View →

📅 Developer Productivity

Must-fork APIs to improve productivity during the software development...

View →

🔄 DevOps

APIs recommended by Postman to enable quick CI/CD, build automation,...

View →

🛒 E-commerce

Ready to use APIs to streamline online shopping, logistics, catalogs, and...

View →

📝 eSignature

Handpicked APIs for seamless e-signatures and document signing,...

View →

🏠 Financial Services

Banking and stock market APIs for managing personal finance, real-time...

View →

💰 Payments

APIs to seamlessly integrate and manage payments in your apps

View →

🌐 Travel

Exciting Travel APIs handpicked by Postman for seamless retrieval of real...

View →

Not sure which category to look within?

Explore what is in the spotlight →

**Companies are building private, partner, and public APIs that generate revenue for the modern enterprise**

**1/2 of respondents spend >50% of their organization's development effort on working with APIs**

**2/3 of respondents said their APIs generate revenue**

- ✦ **43%** said APIs generate over a quarter of company revenue
- ✦ **9%** said APIs generate >75% of company revenue

## **2023 State of the API Report**

**The largest global survey of API practitioners, with 40k responses**

# Postman OpenAI workspace as example



OpenAI

+

...

No Environment

OpenAI

Share

Fork

6.48k

6.13k

...

Overview

Authorization

Pre-request Script

Tests

Variables

The [OpenAI API](#) can be applied to virtually any task that involves understanding or generating natural language or code. We offer a spectrum of [models](#) with different levels of power suitable for different tasks, as well as the ability to [fine-tune](#) your own custom models. These models can be used for everything from content generation to semantic search and classification.

[View complete collection documentation](#) →

API Network

Explore

Search Postman

Artificial Intelligence

Collections

Workspaces

OpenAI

Postman collection to interact with the OpenAI API

By Postman DevRel Updated on 2 Mar, 2023 40k+ views

Unwatch

111



POST text completionGET List modelsOpenAIGET Retrieve modelPOST How to use OpenAI moHow to use OpenAI mod+

4. OpenAI API - Beta / How to use OpenAI models

Save

POST

{{baseUrl}}/chat/completions

Send

ParamsAuthorizationHeaders (11)BodyPre-request ScriptTestsSettings

noneform-datax-www-form-urlencodedrawbinaryGraphQLJSON

```
1 {
2   ... "model": "gpt-4-turbo-preview",
3   ... "messages": [
4     ... { "role": "system", "content": "You are a helpful assistant who answers questions for programmers new to the OpenAI API"},
5     ... { "role": "user", "content": "Give me a short explanation of the most commonly used OpenAI models including GPT, Whisper and DALL-E and the properties they all share when used from the OpenAI API, like model, prompt, max_tokens, temperature and what else you think is essential"}
6   ... ],
7   ... "temperature": 0.3,
8   ... "max_tokens": 2000
9 }
```

BodyCookies (2)Headers (23)Test Results (1/1)

Status: 200 OKTime: 33.31 sSize: 4.31 KBSave as example

PrettyRawPreviewVisualize

OpenAI provides a suite of powerful AI models, each designed for specific types of tasks. The most commonly used models include GPT (Generative Pre-trained Transformer), Whisper, and DALL-E. Despite their different applications, when accessed via the OpenAI API, they share several properties that control how you interact with them. Here's a brief overview of each model and the shared properties:

### GPT (Generative Pre-trained Transformer)

- **Purpose**: Designed for natural language understanding and generation. It can answer questions, write essays, summarize texts, generate creative content, and more.
- **Use Cases**: Chatbots, content creation, text summarization, etc.

### Whisper

- **Purpose**: A speech recognition model that can transcribe spoken language into text. It's designed to handle a wide range of audio qualities and accents.
- **Use Cases**: Transcription services, voice-controlled applications, content accessibility, etc.

### DALL-E

- **Purpose**: An AI model for generating images from textual descriptions. It can create new, unique images based on the descriptions it's given.
- **Use Cases**: Art creation, design mockups, visual content generation, etc.

### Shared Properties for API Interaction

When using these models via the OpenAI API, several properties are commonly specified to control the behavior of the model:

- **Model**: Specifies which version of the model you're using (e.g., 'gpt-3.5-turbo', 'whisper-large', 'dall-e-2'). Each model might have different versions optimized for various tasks or performance levels.
- **Prompt**: The input you provide to the model. For GPT, it's a text prompt. For Whisper, it's an audio file. For DALL-E, it's a textual description of the image you want to generate.
- **Max Tokens**: The maximum length of the model's response. For text-based models like GPT, this limits the number of words or characters in the response. It's essential for controlling output size and computational cost.
- **Temperature**: Controls the randomness of the model's responses. A higher temperature results in more varied and creative outputs, while a lower temperature makes the model's responses more deterministic and conservative.
- **Top P (Top-k Sampling)**: Another parameter influencing the randomness and creativity of the model's output. It narrows or widens the set of possible next tokens the model considers at each step.

### Additional Considerations

- **API Key**: Required for authentication and to track usage against your account's limits and billing.
- **Rate Limits**: Depending on your subscription, you'll have limits on how many requests you can make in a given period.
- **Cost**: Usage is typically billed based on the number of tokens processed (for text) or compute time (for tasks like image generation and audio processing).

When integrating these models into your applications, it's crucial to understand these properties and how they affect the model's performance, output quality, and your costs. Experimenting with different settings can help you find the optimal balance for your specific use case.





# Prompt examples

Explore what's possible with some example prompts

All categories

- Grammar correction**  
Convert ungrammatical statements into standard English.
- Summarize for a 2nd grader**  
Simplify text to a level appropriate for a second-grade student.
- Parse unstructured data**  
Create tables from unstructured text.
- Emoji Translation**  
Translate regular text into emoji text.
- Calculate time complexity**  
Find the time complexity of a function.
- Explain code**  
Explain a complicated piece of code.
- Keywords**  
Extract keywords from a block of text.
- Product name generator**  
Generate product names from a description and seed words.
- Python bug fixer**  
Find and fix bugs in source code.
- Spreadsheet creator**  
Create spreadsheets of various kinds of data.
- Tweet classifier**  
Detect sentiment in a tweet.
- Airport code extractor**  
Extract airport codes from text.
- Mood to color**  
Turn a text description into a color.
- VR fitness idea generator**  
Generate ideas for fitness promoting virtual reality games.
- Marv the sarcastic chat bot**  
Marv is a factual chatbot that is also sarcastic.
- Turn by turn directions**  
Convert natural language to turn-by-turn



# Demo Time(s)

- [Fun APIs Only workspace](#) - Search for “fun apis”
- [Demo workspace we used](#) - Search for “MNU Jena”
- [Postman Youtube Channel](#)
- [Postman Classroom \(material and free Postman teams for schools and other education facilities\)](#)
- [Conference video](#) covering OpenAI API & Postbot
- [GitHub-Repo with API and reference impl](#)



GET List all companiesGET Get companyGlobals4. OpenAI API - BetaNew Environment+No environment

HTTP A(i)ppealing companies 1.2.x / companies / Get companySaveShare

GET{{baseUrl}}/companies/:companyId?material=lego&mode=aiSend

ParamsAuthorizationHeaders (9)BodyPre-request ScriptTestsSettingsCookies

Query Params

<input checked="" type="checkbox"/> Key	Value	Description	...	Bulk Edit
<input checked="" type="checkbox"/> material	lego	Material to use for the product		
<input checked="" type="checkbox"/> mode	ai	Mode to use for the product, exact and fuzzy operate on the curate...		
<input type="checkbox"/> Key	Value	Description		

Path Variables

Key	Value	Description	...	Bulk Edit
companyId	zeiss	(Required) Company ID		

BodyCookiesHeaders (12)Test Results (1/1)Status: 200 OKTime: 15.38 sSize: 1.5 KBSave as example...

PrettyRawPreviewVisualize





# How can I get an OpenAI API key?



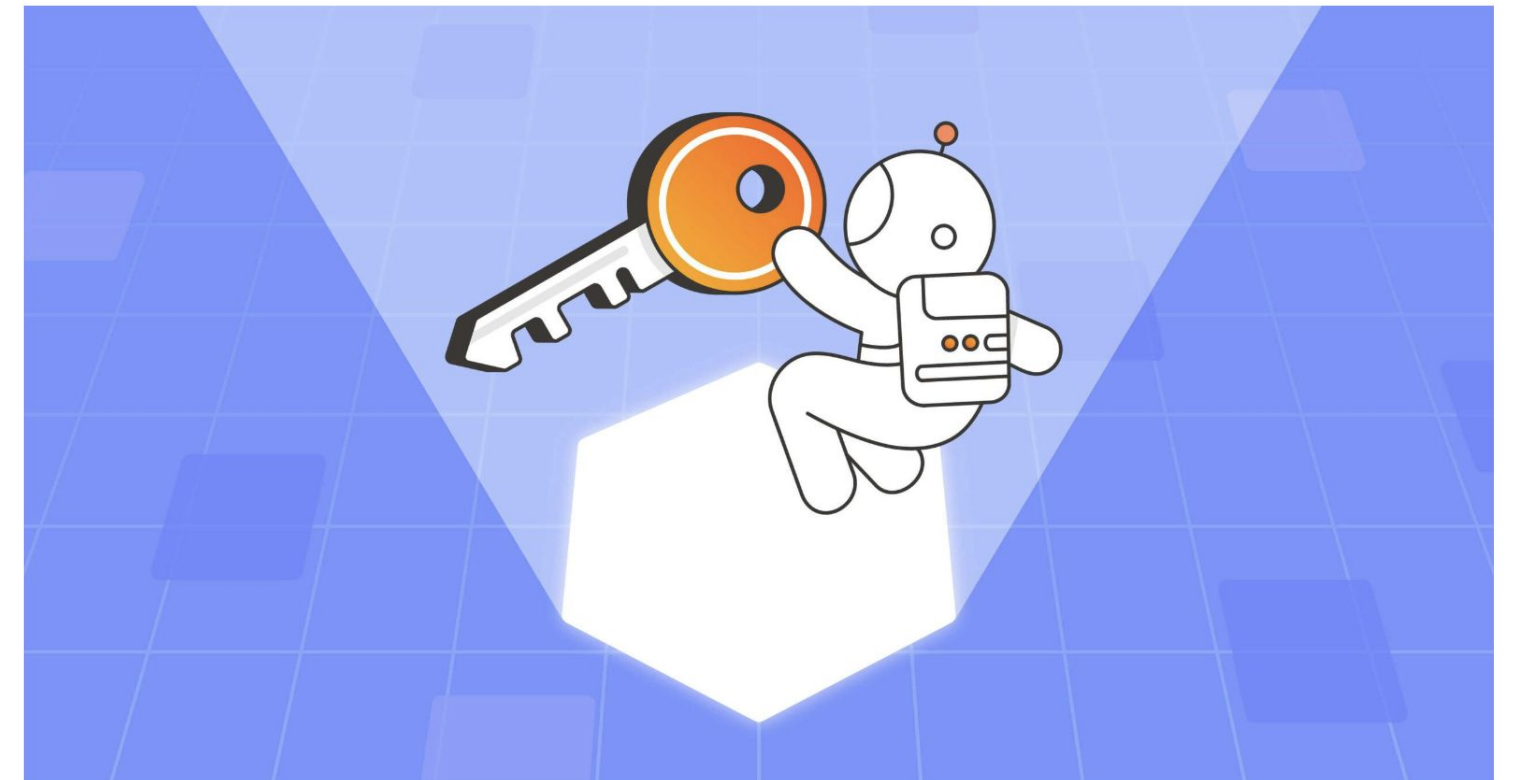
How can I get an OpenAI API key?



To get an OpenAI API key, follow these steps:



1. Go to the OpenAI website at <https://openai.com/>.
2. Click on the "Get Started for Free" button in the top right corner of the page.
3. Create an OpenAI account by entering your email address and a password.
4. Once you have created your account, you will be taken to the OpenAI dashboard. Click on the "API Keys" tab in the left-hand menu.
5. Click on the "Generate API Key" button.
6. Enter a name for your API key (for example, "My First API Key").
7. Select the API model you want to use (for example, "GPT-3").
8. Choose a usage plan based on your needs (for example, "Development").
9. Click on the "Create API Key" button.
10. Your API key will be generated and displayed on the screen. Make sure to copy and save it in a secure location, as you will need it to access the OpenAI API.



## Announcing easier API authentication in Postman



Avinash Choudhary

April 19, 2023 · 3 mins

More than 25 million people around the world now use [Postman Collections](#) to learn about new Public APIs and get to their first successful API call more quickly. However, to send a successful request, authentication is one of the first barriers to entry and is frequently one of the biggest. Today, we are excited to announce our new feature that makes authentication easier in Postman.

Now, you no longer have to invest time in understanding the specific nuances of authentication. Instead, you can start using the API to get *immediate value*. Let's see how this works.



Postman API playground for [Aleph Alpha API](#).

This is not an official workspace but one that adds some additional examples on how to use multi-modal prompts with images

The screenshot displays the Postman API playground for the Aleph Alpha API. The left sidebar shows a collection of API endpoints, including 'Aleph Alpha HTTP API', 'Definition', 'version', 'tokens', 'models', 'tasks', 'Complex completion with...', 'Complex completion / write a...', 'Complex completion with...', 'Complex completion / find...', 'Completion', 'Complex multi-modal image...', 'Complex completion / find...', 'OK', 'Embeddings', 'OK', 'Semantic Embeddings', 'Batched Semantic Emb...', 'Evaluate', 'Explanation', 'Tokenize', 'Detokenize', 'Q&A', 'Summaries', 'Query Recent Usage', 'users', and 'permissions'. The main area shows a POST request to the endpoint '/complex-completion/1'. The request body is a JSON object with a 'prompt' field containing a multi-modal prompt. The response is a JSON object with a 'completions' field containing a list of completion objects. The first completion object has a 'text' field with the text 'This is Waldo' and a 'finish\_reason' field with the value 'end\_of\_text'. The second completion object has a 'text' field with the text 'A. Yes, Waldo is in the middle of the second picture. The table is close to him.' and a 'finish\_reason' field with the value 'end\_of\_text'.

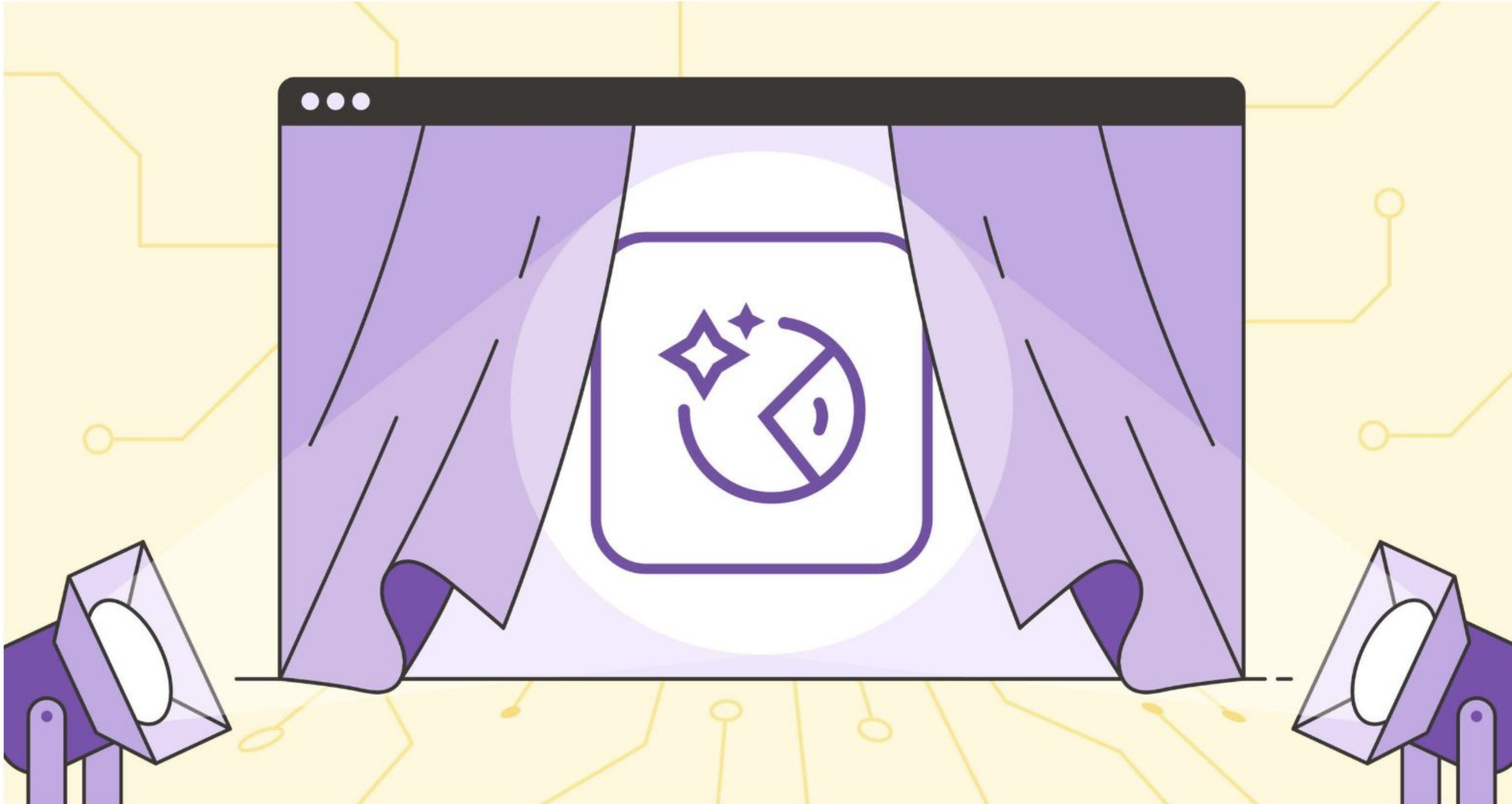
```
POST /complex-completion/1

{
  "prompt": [
    {
      "type": "image",
      "data": "data:image/jpeg;base64,..."
    },
    {
      "type": "text",
      "data": "Can you find Waldo from the first picture on the second picture and if so, where exactly and can you also tell me whether a table is close to Waldo?"
    }
  ]
}
```

```
{
  "completions": [
    {
      "text": "This is Waldo",
      "finish_reason": "end_of_text"
    },
    {
      "text": "A. Yes, Waldo is in the middle of the second picture. The table is close to him.",
      "finish_reason": "end_of_text"
    }
  ]
}
```

Find Waldo, write a poem and object analysis examples included





## **Introducing Postbot, Postman's new AI assistant**

# Generate visualizations and tests automagically ✨

My Workspace

NewImport

Collections

Environments

History

HP-API

GET All characters

GET All characters No visualization

GET Hogwarts students

GET Hogwarts students No tests

GET Hogwarts students No Visualiz...

GET Hogwarts staff

GET Characters in house

GET Spells

GET Spells No visualization

OpenAI jonico's fork

Task: Weather API

Overview

GET All characte

No Environment

HTTP

...

All characters No visuali...

Save

GET

...

{{render}}/api/characters

Params

Query Params

	Key	Value	De...
	Key	Value	Descrip

Body

200 OK

257 ms

163.62 KB

Save

Test Results

Visualize

Visualize response with Postbot

Visualize Response

Overview

GET All characters Postbot

GET Hogwarts students Po

No Environment

HP-API

Hogwarts students Postbot

Save

GET

...

{{render}}/api/characters/students

Send

Params

Authorization

Headers (7)

Body

Pre-request Script

Tests

Settings

Cookies

// Assert that Hermione is in the same house as Harry and log that house to the console

1

2

3

4

5

6

7

8

9

10

11

12

13

function () {

var characters = pm.response.json();

var hermione = characters.find(function (character) {

return character.name === "Hermione";

});

var harry = characters.find(function (character) {

return character.name === "Harry";

});

pm.expect(hermione.house).to.equal(harry.house);

console.log("Hermione's house is: " + hermione.house);

}

Assert that Hermione is in the same house as Harry and log that house to the console

Add tests to this request

Test for response...

Visualize response...

Save a field from response

Fix tests

Added test to assert that Hermione is in the same house as Harry and log the house to the console

Share Feedback

Body

Cookies

Headers (14)

Test Results (0/1)

Status: 200 OK

Time: 76 ms

Size: 42.06 KB

Save as Example

Pretty

Raw

Preview

Visualize

JSON

1

2

3

4

5

6

7

8

1

{

"id": "9e3f7ce4-b9a7-4244-b709-dae5c1f1d4a8",

"name": "Harry Potter",

"alternate\_names": [

"The Boy Who Lived",

"The Chosen One"

]

}





## Source Code

- Github
- Gitlab
- Bitbucket
- Azure Repos
- AWS CodeCommit
- Assembla
- SourceForge
- Sonatype Nexus
- JetBrains Space

## API Platform

### API Lifecycle

#### API Client

Postman

#### API Design & Mocking

Postman

#### API Testing & Automation

Postman

#### API Documentation

Postman

#### API Monitoring

Postman

### Collaboration

#### API Workspaces

Postman

#### API Catalog

Postman

### Governance

#### API Security

Postman

#### API Governance

Postman

#### API Observability

Postman

## CI/CD

- Jenkins
- CircleCI
- GitLab
- GitHub
- Travis CI
- Azure Pipelines
- Bitbucket
- JFrog Pipelines
- Harness
- AWS CodePipeline
- Google Cloud
- TeamCity
- HashiCorp
- CloudBees
- Buddy
- Atlassian Bamboo
- Octopus Deploy
- Buildkite
- Bitrise

## Cloud / Gateways

- AWS API Gateway
- Azure API Management
- Apigee

- MuleSoft
- Kong API Gateway
- KrakenD
- Software AG
- Gravitee

- Tyk
- Axway Amplify
- Layer7 API Gateway
- RedHat 3scale
- Ambassador
- IBM API Connect
- Solo
- Aklivity
- Boomi
- WSO2
- TIBCO
- Traefik

## APM

- Datadog APM
- New Relic
- BigPanda
- Splunk
- Coralogix
- PagerDuty
- Statuspage
- OpsGenie

- Grafana
- Chronosphere
- Elastic
- Tekton
- Observe
- Cribl
- Keen
- ServiceNow Lightstep

- Sentry
- Honeycomb
- LogicMonitor
- Dynatrace
- AppDynamics
- IBM Instana

## Specifications

- OpenAPI
- gRPC
- WSDL
- GraphQL
- Protobuf
- JSON Schema
- AsyncAPI
- RAML
- Avro
- API Blueprint
- Thrift



# Brewing Innovations...



## Postbot, Postman's new AI Assistant

Using Generative AI, help you debug and understand APIs, write tests faster, and make sense of large quantities of data



## Postman Flows

Simplify and streamline software development in an API-first world, connecting APIs as blocks on an infinite canvas for efficient and collaborative creation of workflows, and API applications



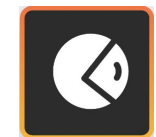
## Live Collections

An automated way to generate and update Postman Collections for your APIs. As your application evolves, so does your Collection.



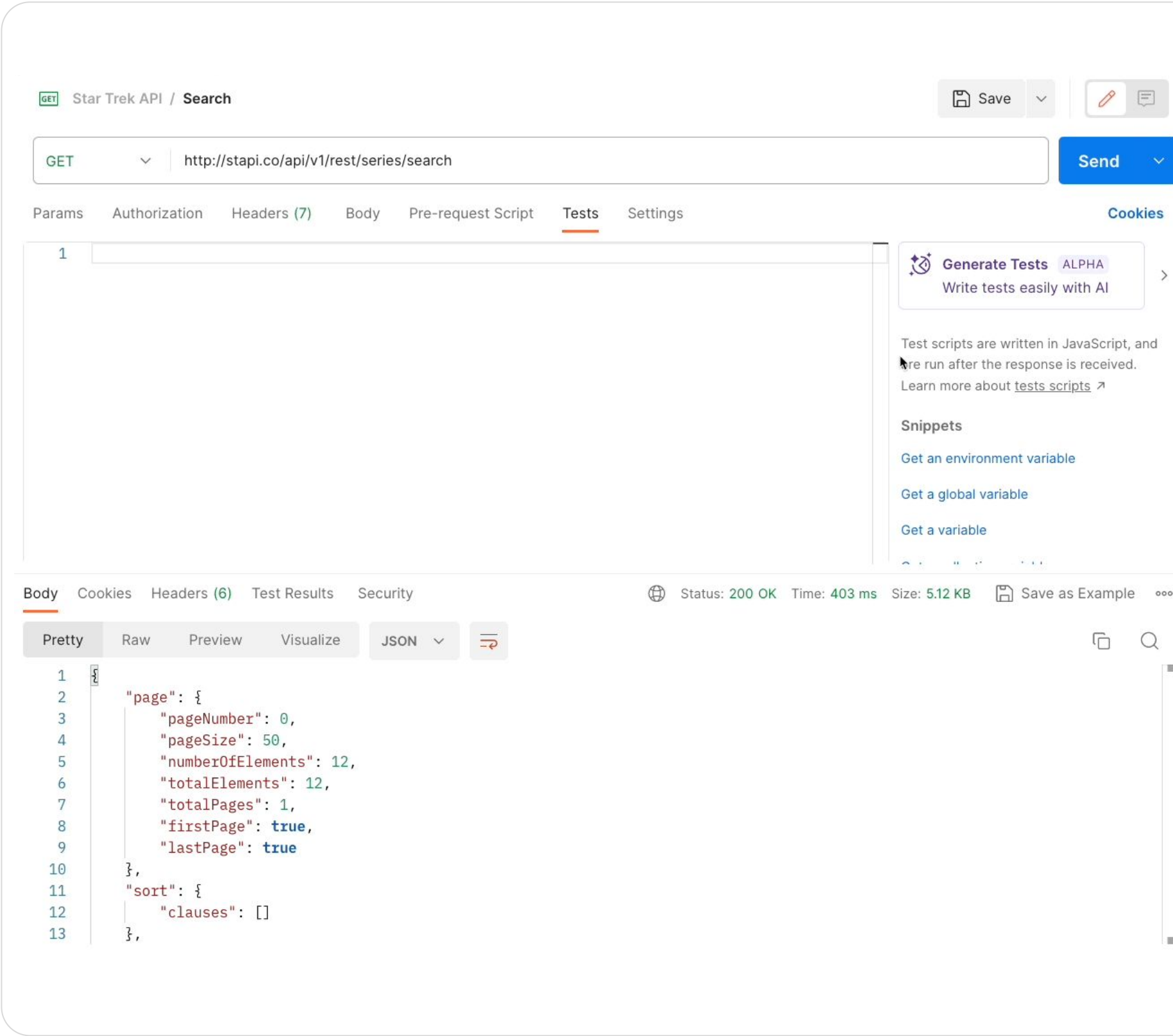
## Performance Testing

Simulate real-world traffic, optimize API performance, and identify bottlenecks within a seamless and intuitive interface



## Postman VS Code Extension

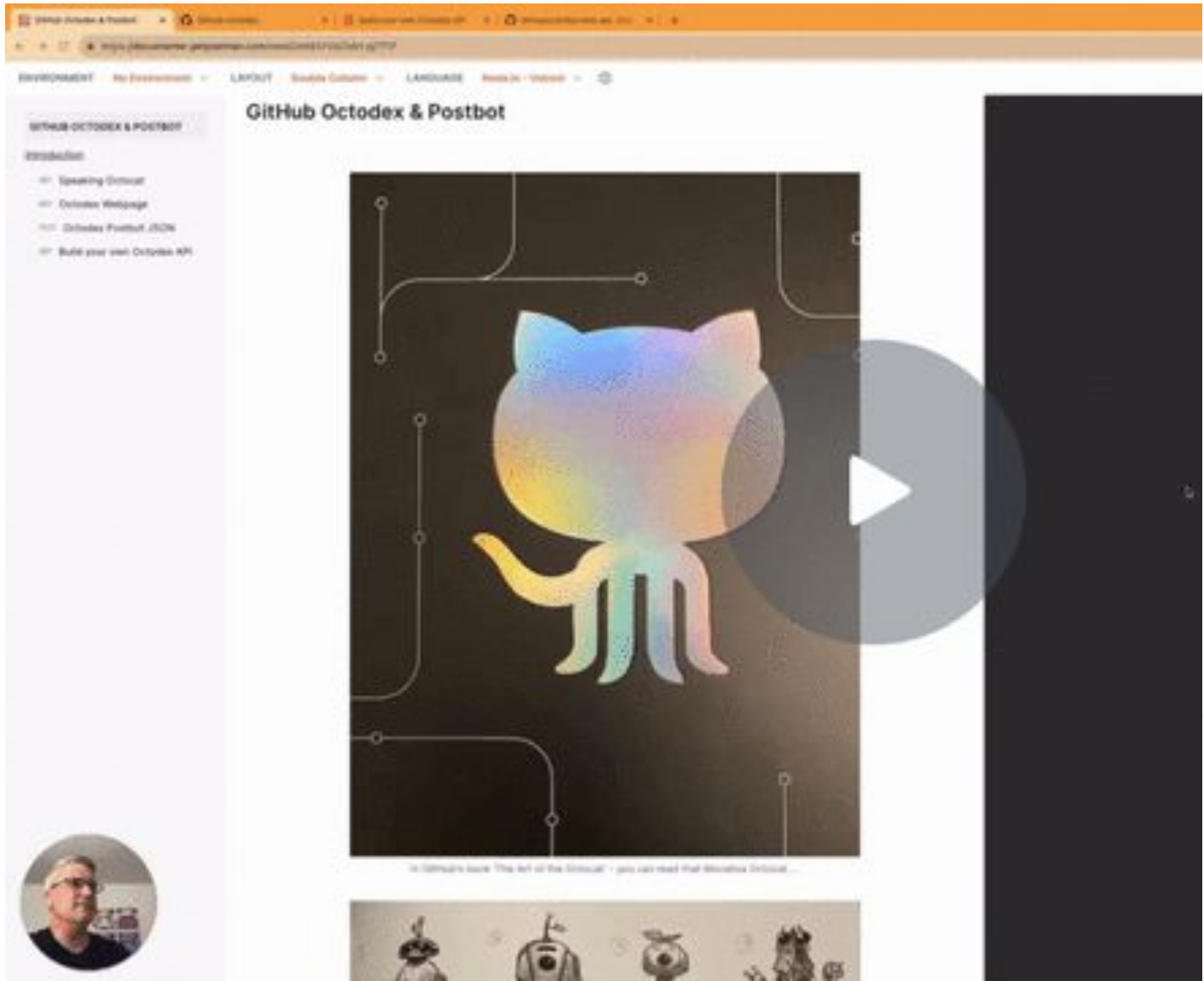
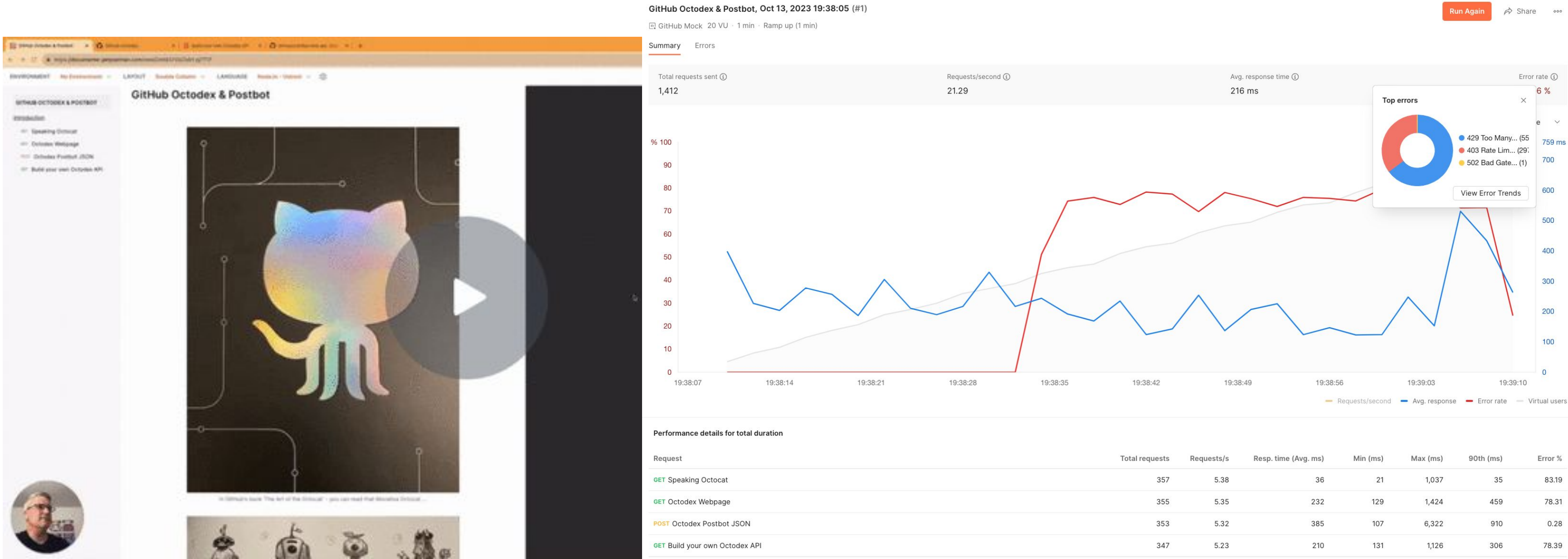
Developers can leverage the API testing and development capabilities of Postman directly within VS Code





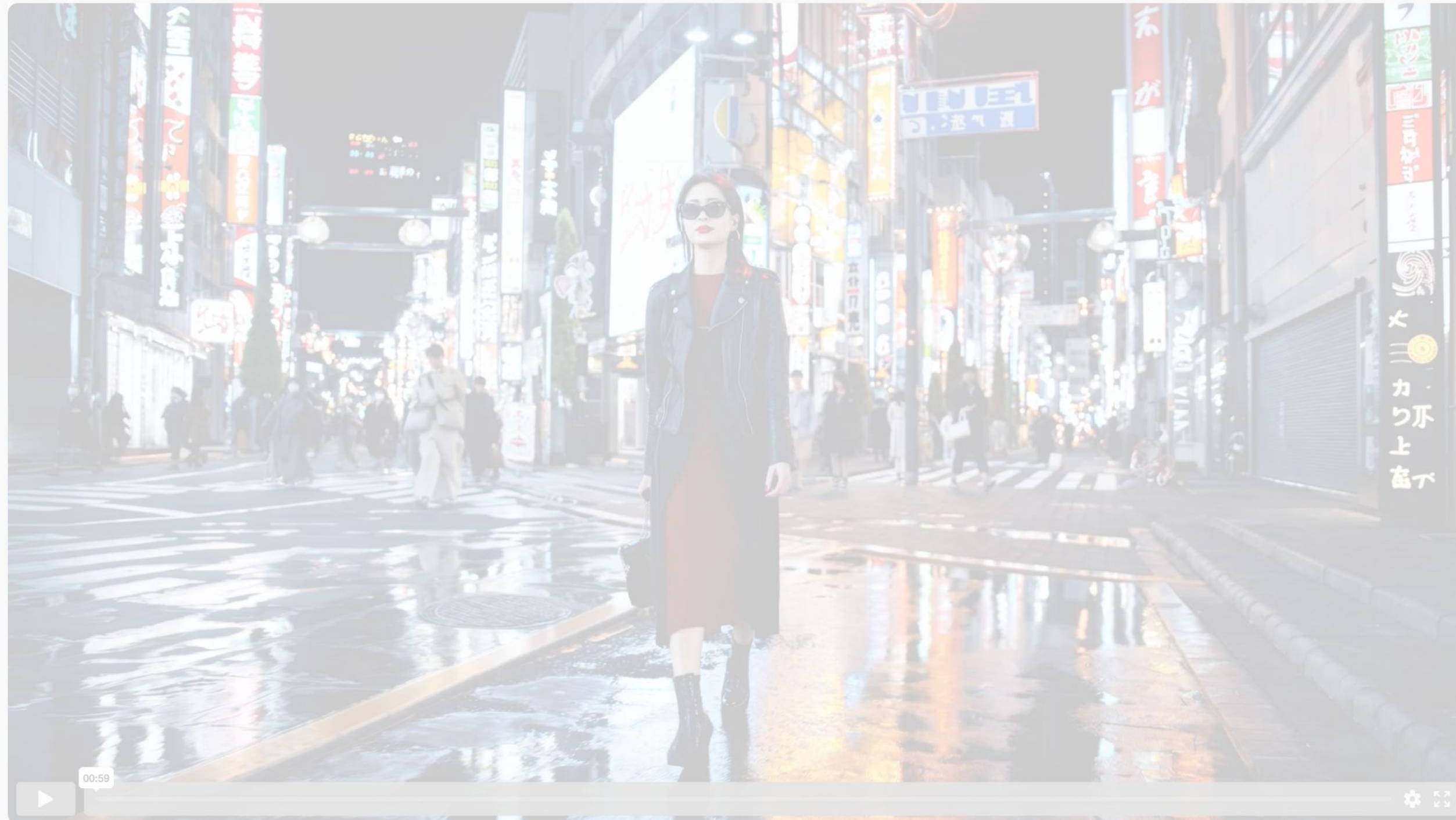
# Leistungskurs+: Request chaining, test generation, performance testing ...

All in one Demo - [Watch Video](#)





# OpenAI is ever changing - Introducing Sora ...



Prompt: A stylish woman walks down a Tokyo street filled with warm glowing neon and animated city signage. She wears a black leather jacket, a long red dress, and black boots, and carries a black purse. She wears sunglasses and red lipstick. She walks confidently and casually. The street is damp and reflective, creating a mirror effect of the colorful lights. Many pedestrians walk about.

0:00 / 0:00 ⏏ ⏶ ⏷ ⏸ ⏹ ⏺





**Thank You**